

3. hlas Prehľad melodických formúl ukončených tónom a

// 3rd echos List of melodic formulae ending on a

+ G, d, e, **Thematismoi**

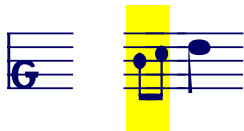
a3

Typ hd, cd

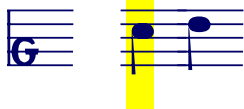
Ukončuje blok. // Closes a block.

Kadencie // Cadences

mmt



Am	¨. —	Dk, Ott, Trin
Sn1214	¨ —	
Δ.α.32	¨ /	



Dk	¨ —	G355, Trin
Dk	— . —	Trin
Vi	— ¨	Sn1214/17, Va
Vi	— —	Sn1214/17, Va
Va	¨ ¨	
Sn1217	— \	



Am		Ott
Am		Ott
Dk		G355



Dk		Ott, Trin
Dk		
Sn1214		
Vi		Sn1214/17, Va
Vi		Sn1214/17, Va

**Modifikácia prechodovým motívom
// Modification – leading-on motif**



Dk		
Am		Dk, Ott
Vi		Sn1214/17

1.9. – hapax (paralela k štandardnému tvaru)



G355	> — —
------	-------

mdt

Musical score for 'mdt'. The score includes a melody in G major (G4, A4, B4, A4-G4, F4-E4, D4) and several percussion parts. The percussion parts are: Dk (Drum Kit), Trin (Triangle), Am (Anvil), Sn1214 (Snare Drum), G355 (Gong), Vi (Vibraphone), and Va (Vibraphone). The percussion parts are arranged in a 2/4 time signature. The melody is highlighted in yellow.

Modifikácia prechodovým motívom // Modification – leading-on motif

Musical score for 'Modifikácia prechodovým motívom'. The score includes a melody in G major (G4, A4, B4, A4-G4, F4-E4, D4) and several percussion parts. The percussion parts are: Trin (Triangle), Vi (Vibraphone), Ott (Ottobello), Am (Anvil), and Va (Vibraphone). The percussion parts are arranged in a 2/4 time signature. The melody is highlighted in yellow.

Diplasiasmos na kadenčnom vrchole // Diplasiasmos on the cadential peak

Estisan 30

Ott

Ott

Am

Dk

Va

Trin

Dk

Vi

Sn1214

Sn1214

PVVe

G260

Ott

Am

Dk





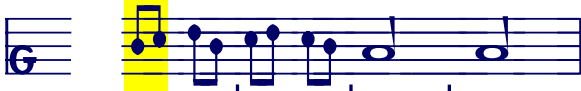










Vi

Sn1214

Va

dmf

13.9., Estisan 30

		
Trin		
		
Dk		
		
Trin		
Vi		
		
Am		Dk, Ott
Vi		Va, Sn1214
Sn1214		
		
G355		
Sn1217		
Sn1214		

Prívody // Leading-in motives

d

PS02MPza – skrátený tvar prívodu typu dG // a short form of the dG leading-in motif



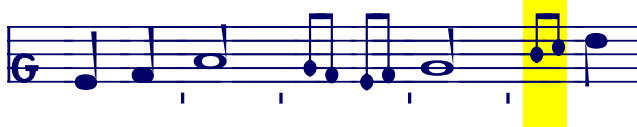
Ott						
Trin						



Am							Dk
Vi							Sn1214
Va							
	σώ-	σον Χρι-στέ	ο	Θε-	ός,		

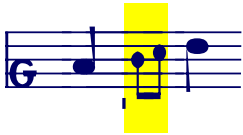
G3

13.12. – motív G3 sa nedá vyčleniť ako formula // this motif cannot be separated as a formula



Am							<i>Dk, Ott</i>
Vi							
Sn1217							
Sn1214							

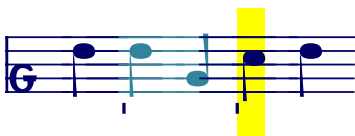
G, a



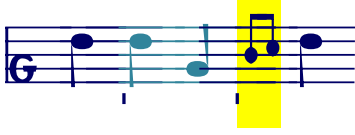
- mult. >
- mult. >
- Vi > Sn1214, Va
- Vi > Sn1214/17, Va
- Vi Sn1214/17
- Va >

dg, da

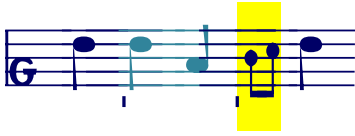
d



- Dk — Trin
- Vi Va
- Vi Va
- Vi Va, Sn1214/17



- Am — Ott



- Dk —
- Sn1214 Sn1217
- Sn1214

G260 $\ddot{\cdot}$ - \curvearrowright \times $\ddot{\cdot}$

Am $\ddot{\cdot}$ - \curvearrowright \wp $\ddot{\cdot}$ Dk

Am \succ $\ddot{\cdot}$ - \curvearrowright \times $\ddot{\cdot}$

Ott $\ddot{\cdot}$ - \curvearrowright \times $\ddot{\cdot}$

Ott $\ddot{\cdot}$ - \curvearrowright \times $\ddot{\cdot}$

Vi $\ddot{\cdot}$ - \curvearrowright \times - Va

Am - $\ddot{\cdot}$ \curvearrowright \wp $\ddot{\cdot}$

Dk - \curvearrowright \times $\ddot{\cdot}$

Dk \curvearrowright - \curvearrowright \times $\dot{\cdot}$ G355

Trin - - \curvearrowright \times $\ddot{\cdot}$

Sn1214 - - \curvearrowright \times -

Vi \curvearrowright - \curvearrowright \times - Va

Vi \curvearrowright - \curvearrowright \times -

Sn1214 \succ - \curvearrowright \times \curvearrowright

Ott \succ $\ddot{\cdot}$ \curvearrowright \succ $\ddot{\cdot}$ \curvearrowright \times $\ddot{\cdot}$

Am \succ $\ddot{\cdot}$ \curvearrowright \succ $\ddot{\cdot}$ \curvearrowright \wp $\ddot{\cdot}$

G260 \succ \curvearrowright \succ \curvearrowright \wp $\ddot{\cdot}$

Δ .a.32 \curvearrowright \curvearrowright \succ \curvearrowright \times $\ddot{\cdot}$

Vi \curvearrowright \curvearrowright \succ \curvearrowright \times $\ddot{\cdot}$ Sn1214

Dk \curvearrowright \curvearrowright \succ $\ddot{\cdot}$ \curvearrowright \times $\dot{\cdot}$

G355 \curvearrowright \curvearrowright \succ \curvearrowright \times $\dot{\cdot}$

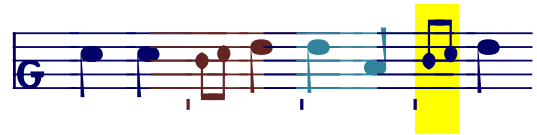
Sn581 \curvearrowright \curvearrowright \succ \curvearrowright \times -



Am $\text{r } \text{c} > \dots - \text{c} > \times \ddot{\cdot}$ Ott
 Sn1214 $\text{r } / > \ddot{\cdot} \checkmark > \ddot{\cdot}$



Dk $\text{r } \text{c} > \dots - \text{c} > \times \ddot{\cdot}$
 Vi $\text{r } / > \ddot{\cdot} \checkmark > -$
 Va $\text{r } / > \dots - \checkmark > -$



Dk $- \text{c} > \dots - \text{c} \text{ } \text{ } \ddot{\cdot}$

Am $- \text{c} > \dots - \text{c} > \times \ddot{\cdot}$ Ott
 Vi $\text{r } \text{c} > \dots - \checkmark > \times -$ Va
 Sn1214 $\text{r } \text{c} > \dots - \checkmark > \ddot{\cdot}$



Am $/ > > \ddot{\cdot} - \text{c} > \times \ddot{\cdot}$ Dk,Ott
 Sn1214 $/ > > \dots - \checkmark > \times \ddot{\cdot}$



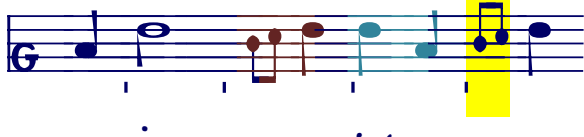
Dk $/ > > \ddot{\cdot} - \text{c} > \times \ddot{\cdot}$
 Vi $/ \downarrow > > \dots - \checkmark > \times -$ Va
 Vi $/ > > \dots - \checkmark > \times -$ Sn1214/17



Dk $> \text{c} / \checkmark > \ddot{\cdot} - \text{c} > \times \ddot{\cdot}$ G355
 Vi $> / \checkmark > \dots - \text{c} > \times -$ Sn1217
 Vi $> / \checkmark > \dots - \text{c} > -$ Sn1214



Am $> \text{c} / \checkmark > \ddot{\cdot} - \text{c} > \times \ddot{\cdot}$ Ott



Dk $> \text{c} / \checkmark > \ddot{\cdot} - \text{c} \text{ } \text{ } \ddot{\cdot}$
 Sn1214 $\text{r } / \checkmark > \text{c} - \checkmark > \times \ddot{\cdot}$

m

Am > - - - f^c | : Ott

Dk > - - - f^c | Trin

Vi f^c f^c - - - f^c |

Va f^c - - - f^c |

Vi f^c - - - f^c |

Va f^c - - - f^c |

Am f^c f^c - - - f^c | : Ott

Dk f^c f^c - - - f^c |

G355 f^c f^c - - - f^c |

Vi f^c f^c - - - f^c | Sn1214/17

Am f^c f^c f^c - - - f^c | : Ott

Dk f^c f^c f^c - - - f^c |

Vi f^c f^c f^c - - - f^c | Sn1214/17

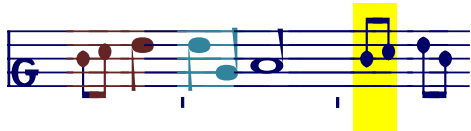


Am

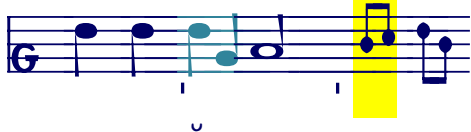


Dk

Estisan 30



Am



Trin








Am

Typ ca

Ukončuje blok. // Closes a block.

Kadencie // Cadences

mmf

			
G355	> > > >		
Vi	> > // >	>>	┌
			Sn1214
			
Am	> > // >	>>	┌
			Dk ₂
			
Trin	> > // >	┌	
			
G355	> > // >	┌	
			
Am	> > // >	>>	┌
Vi	> > //	//	┌
Vi	> > //	//	//
Vi	> > //	//	//
Sn1214	> > //	>	//
Va	> > //	//	//
Vi	> > //	//	//
Va	> > //	//	//
			Dk, Ott, Trin
			Sn1214, Va
			Sn1214

mdt

Dk > \ddot{n} > n // \ddot{y} > > r r Ott

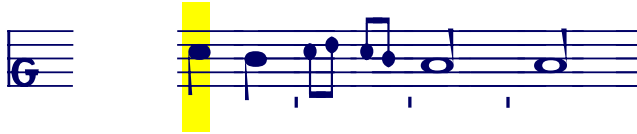
G355 > \ddot{n} > n // \ddot{y} > > r r
 Vi > \ddot{u} > // > r r Sn1217
 Sn1214 > \ddot{u} > // > > r r

Dk > \ddot{u} > // \ddot{y} > > r r
 Va > > // > > r r
 Vi > > // > > r r

Am > \ddot{u} > // \ddot{y} > > r r Dk, Ott, Trin

Am > \ddot{u} > // \ddot{y} > n r r Dk, Ott
 Vi > \ddot{u} > // \ddot{y} > r r Va, Sn1217
 Sn1214 > \ddot{u} > // > > //
 Vi > \ddot{u} > // > > //
 Sn1214 > \ddot{u} > // > | r r
 Vi > > // \ddot{y} > > >

dmf



G355

>u > ˘ >u > » ˘

Vi

>u > / \ > » »

Sn1214



Dk

>u > ˘ ˘ > » ˘

Vi

>u > / > // ˘

Sn1214

Va

>u > / \ // ˘



Ott

>u > ˘ ˘ > » ˘

Am,Trin

Sn1217

>u > - \ > » »

ddt

Musical staff for Dk and Sn1214. The staff is in G major (one sharp) and contains a sequence of notes: G4, A4, B4, C5, B4, A4, G4. A yellow vertical bar highlights the first two notes (G4 and A4).

Dk

>u> > / > > r r

Sn1214

>u> > / > > > r

Musical staff for Ott and Trin. The staff is in G major and contains a sequence of notes: G4, A4, B4, C5, B4, A4, G4. A yellow vertical bar highlights the first two notes (G4 and A4).

Ott

>u> > - / > > r

Musical staff for Trin and Am. The staff is in G major and contains a sequence of notes: G4, A4, B4, C5, B4, A4, G4. A yellow vertical bar highlights the first two notes (G4 and A4).

Trin

>u> > - / > > r //

Musical staff for Am and Dk. The staff is in G major and contains a sequence of notes: G4, A4, B4, C5, B4, A4, G4. A yellow vertical bar highlights the first two notes (G4 and A4).

Am

>u> > - / > > r r Dk

Musical staff for Dk and Trin. The staff is in G major and contains a sequence of notes: G4, A4, B4, C5, B4, A4, G4. A yellow vertical bar highlights the first two notes (G4 and A4).

Dk

>u> > / > > r r Trin

Vi

>u> > / > r r

Vi

>u> > / > > //

Va

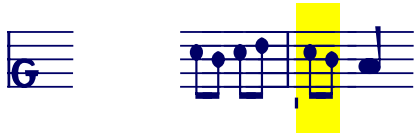
>u> > / > > //

Sn1214

>u> > / > > >>

Prívody // Leading-in motives

Krátky // Short



Am			Dk, Ott
Sn1214			
Vi			Va
Vi			Va

Jednoduchý na c // Simple on c



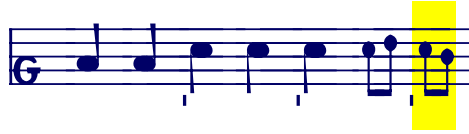
Dk		
Trin		
Vi		Va, Sn1214
Vi		



Am		Dk, Ott
Vi		
Vi		Sn1214, Va
Sn1214		



Dk		Ott
G355		
Sn1214		
Vi		Sn1217



mult.		
-------	--	--

via a2



G355 > ˆ > ˆ > ˆ > ˆ



Ott ˆ ˆ > ˆ > ˆ > ˆ

Trin > ˆ > ˆ > ˆ > ˆ



Am ˆ ˆ > ˆ > ˆ Dk, Ott

Vi ˆ / > / > / Sn1214

Sn1214 — / > / >

via e2



Am > ˆ > ˆ > ˆ > ˆ



Dk > ˆ > ˆ ˆ > ˆ Ott, G355

Sn1214 > > ˆ / > / >

Vi > > ˆ / > / >

Sn1217 > > ˆ / > / >

via e3



Am > > > > > > >



Dk > > > > > > Ott

G355 > > > > > >

Vi > > > > > > Sn1214



Am > > > > > > Dk,Ott

Am > > > > > > Dk,Ott

Vi,Va > > > > > > Sn1214

Vi > > > > > >

Sn1214 > > > > > >

Vi > > > > > > Va,Sn1214



Am > > > > > > Dk, Ott

Vi > > > > > > Va, Sn1214



Dk > > > > > > Ott, Trin, Am

Vi > > > > > >

Sn1217 > > > > > >

Sn1214 > > > > > >

Iné // Other types

G2-3

18.1.,PVVa



Am > - // - > / > // > > >



Dk > - // - > / > // > > > Ott, Trin

Vi > :: // > / > // > > >

Va > :: // > / > // > > >



Ott > ñ / > // - > / > // > > >



Am > ñ / > // - > / > // > > > Dk

Vi > x > // - > / > // > > > Sn1214/17

a2



Am > > > > > > Dk
 Ott > > > > > > > > > >
 Vi > > > > > > > > > >
 Sn1214 > > > > > > > > > >



Am > > > > > > Dk,Ott
 Vi,Va > > > > > > > > > >
 Sn1214 > > > > > > > > > >

Ga



mult. > > > > > >
 Vi > > > > > >
 Sn1214 > > > > > >
 Sn1217 > > > > > >



Am > > > > > >
 Vi > > > > > >
 Sn1214 > > > > > > Va

Prechodový // Transitional



G260 > > - / > > n r



Am 5 - - / > > n r Trin
 Am > - / > > n r Dk,Ott



Ott > > - / > > n r
 Vi > > - / > > n r Sn1214
 Va > > - / > > n r Sn1214/17



Am 5 - - / > > n r
 Dk 5 - - / > > n r



Ott > > - / > > n r
 Sn1214 > > - / > > n r
 Vi > > - / > > n r
 Va > > - / > > n r



Am > / > > n r
 Dk > / > > n r
 Vi > / > / > n r Sn1214
 Va > / > / > n r

Iné // Other

24.12.



G54



Trin



G262



Ott



Am



Dk

Vi

Sn1214

Sn1217

πέ-πει-σμαι, ό- τι Θε- όν

a2

dh.ch.a

Bez prívodu // The core formula



Trin



G355



Am



Ott

Sn1214



Vi



Dk



Ott,Trin,G355

Sn1217



Sn1214



Sn1217



Vi



Sn1214

Va



a-d



Dk > ˘ ˘ ˘ ˘ / > > Trin



Am > ˘ ˘ ˘ ˘ / > >



Ott > ˘ ˘ ˘ ˘ / > > G355

Sn1217 > ˘ ˘ ˘ ˘ / > >

Vi > ˘ ˘ ˘ ˘ / > >

Sn1214 > ˘ ˘ ˘ ˘ / > >

Vi > ˘ ˘ ˘ ˘ / > > Sn1214



G260 > ˘ ˘ ˘ ˘ / > >



Am > ˘ ˘ ˘ ˘ / > > Dk,Ott

Vi > > ˘ ˘ / > > Sn1217

Sn1214 > > - / > >



Dk > ˘ ˘ ˘ ˘ / > > Trin



G355 > ˘ ˘ ˘ ˘ / > >

Vi > ˘ ˘ / > >

Sn1214 > ˘ ˘ / > >



Am	>	∩	∩	>	∩	/	>	>	Dk,Ott,Trin
Sn1214	-	-	/	>	/	>	//		
Vi	∩	/	∩	>	/	>	>	Sn1214/17	
Va	-	/	∩	>	/	>	//		
Vi	>	>	∩	>	/	\	//		
Sn1217	>	/	∩	>	/	\	//		
Sn1214	∩	∩	∩	>	/	\	//		



Dk	>	∩	∩	>	/	>	>	G355
Vi	>	-	∩	\	/	>	>	Sn1217
Sn1214	>	∩	/	\	∩	>	>	
Vi	∩	-	∩	\	/	>	>	
Sn1214	∩	-	∩	\	/	>	∩	



Trin	>	∩	∩	∩	>	/	>	∩
------	---	---	---	---	---	---	---	---



Am,Dk	>	∩	>	∩	>	/	>	∩	Ott
Vi,Va	>	∩	/	>	/	>	/	>	//

a-d2



Am	>	♩	♩	♩	♩	♩	♩	♩	Ott
Dk		♩	♩	♩	♩	♩	♩	♩	
Vi	>	—	♩	♩	♩	♩	♩	♩	
Va	>	♩	♩	♩	♩	♩	♩	♩	
Vi		♩	♩	♩	♩	♩	♩	♩	
Va		♩	♩	♩	♩	♩	♩	♩	



Dk	>	♩	♩	♩	♩	♩	♩	♩	Trin
Sn1217	>	>	♩	♩	♩	♩	♩	♩	
Vi	>	—	♩	♩	♩	♩	♩	♩	
Sn1214	>	♩	♩	♩	♩	♩	♩	♩	
Vi	♩	♩	♩	♩	♩	♩	♩	♩	Sn1214
Vi		♩	♩	♩	♩	♩	♩	♩	Sn1214
Va		♩	♩	♩	♩	♩	♩	♩	



Am	>	>	♩	♩	♩	♩	♩	♩	Dk,Ott
Sn1214	♩	♩	♩	♩	♩	♩	♩	♩	
Vi	♩	♩	—	♩	♩	♩	♩	♩	Va



G355 > ♮ ♮ ♮ ♮ ♮ ♮ ♮ ♮



Am > ♮ ♮ ♮ ♮ ♮ ♮ ♮ ♮ Dk



Ott > ♮ ♮ ♮ ♮ ♮ ♮ ♮ ♮

Vi > ♮ ♮ ♮ ♮ ♮ ♮ ♮ ♮ Sn1217

Sn1214 > ♮ ♮ ♮ ♮ ♮ ♮ ♮ ♮



Am ♮ - - ♮ ♮ ♮ ♮ ♮ ♮ ♮ ♮



Ott ♮ - - ♮ ♮ ♮ ♮ ♮ ♮ ♮ ♮



Dk ♮ - - ♮ ♮ ♮ ♮ ♮ ♮ ♮ ♮

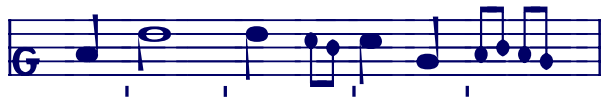
Vi ♮ - - ♮ ♮ ♮ ♮ ♮ ♮ ♮ ♮

Va ♮ - - ♮ ♮ ♮ ♮ ♮ ♮ ♮ ♮

Modifikácia prechodovým motívom // Modification – leading-on motif



G355 ♩ ♯ ♮ ♮ ♮ ♮ ♮



Dk ♩ ♯ ♮ ♮ ♮ ♮ ♮



Am ♩ ♯ ♮ ♮ ♮ ♮ ♮

Vi ♩ ♯ ♮ ♮ ♮ ♮ ♮

Sn1214 ♩ ♯ ♮ ♮ ♮ ♮ ♮

Ott
Sn1217

yc, yd



Am  Ott



Dk 



Ott 



Dk 



Trin 



Ott 



G260 



Dk 

Vi  Δ.α.32,Sn1214

Sn581 

Vi 

Vi  Va

Sn1214 

Vi  Va



Trin — $\ddot{\cdot}$ \approx \curvearrowright \succ \diagup \succ \succ



Am \curvearrowright — \approx \curvearrowright \succ \diagup \succ \succ Dk
Dk \curvearrowright — \approx \curvearrowright \succ \diagup \succ \succ



Ott \curvearrowright — \approx \curvearrowright \succ \diagup \succ \succ
Vi \curvearrowright — \approx \diagup \succ \diagup \succ \curvearrowright Va



Am \curvearrowright \approx \curvearrowright \succ \diagup \succ \succ \succ
Dk \curvearrowright \approx \curvearrowright \succ \diagup \succ \succ \succ
Ott \curvearrowright \approx \curvearrowright \succ \diagup \succ \succ \succ
Vi, Va \curvearrowright \approx \curvearrowright \succ \diagup \succ \succ \approx

e

1



Ott - . ˘ > - / > ˘ / > >
 Am - . ˘ > - ˘ ˘ ˘ / > >
 Dk - . ˘ > - ˘ ˘ ˘ / > ˘
 Vi - / ˘ - / ˘ > > / > >
 Va - / ˘ - / ˘ > > / > >



Am - - ˘ ˘ ˘ ˘ ˘ / > »



Dk ˘ ˘ - ˘ ˘ ˘ / > »



G355 ˘ ˘ - ˘ > / > ˘ / > »



Ott ˘ ˘ - ˘ ˘ ˘ / > »

Vi ˘ ˘ - / > / > > / > //

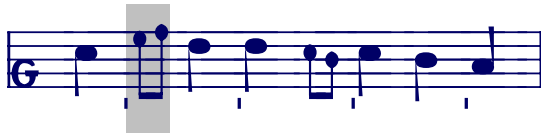
Sn1217

Sn1214 ˘ ˘ / / ˘ ˘ / > > / > //

2



Am ˆ > ˆ > / > > Ott
 Dk ˆ > ˆ > / > >
 Vi ˆ > ˆ > / > > Δ.α.32, Sn1214
 Sn581 ˆ > ˆ > / > >



Am ˆ > ˆ > / > > Ott
 Dk ˆ > ˆ > / > >
 Sn1214 ˆ > ˆ > / > >
 Vi ˆ > ˆ > / > >



Dk ˆ > ˆ > / > >



Ott ˆ > ˆ > / > >



Am ˆ > ˆ > / > >
 Vi ˆ > ˆ > / > > Sn1214/17

4



Am ˆ > ˆ > / > > Ott
 Dk ˆ > ˆ > / > >
 Vi ˆ > ˆ > / > > Va

hc, cd



Am ♩ — — ♪ > / > > Dk, Ott
 Sn1214 ♩ ♩ ♪ > / \ //
 Vi — ♪ > / > >× Va



Dk — — ♪ > / > »
 Vi — — / > / > //



Am ♩ — — ♪ > / > > Dk, Ott, Trin
 Ott ♩ — — ♪ > / > >



Dk ♪ > ♩ > — ♪ > / > »



Ott ♪ > ♩ > — ♪ > / > »



Am >> ♩ ♩ > — ♪ > / > »
 Va >> ♩ ♩ > — / > / > //
 Vi >> ♩ ♩ > — / > / > //
 Sn1214 >> ♩ ♩ > ♩ / > / > //



Am ↓ ♩ ♩ ♩ ♩ ♩ ♩ ♩ ♩



Dk ↓ ♩ — ♩ ♩ ♩ ♩ ♩ ♩ G355



Ott ↓ ♩ — ♩ > ♩ ♩ ♩ ♩

Vi ♯ — ♩ ♩ ♩ ♩ ♩ ♩ ♩

Sn1214 ♯ ♩ ♩ ♩ ♩ ♩ ♩ ♩ Sn1217

d.hc.a

Bez prívodu // The core formula



Am \smile > \smile \smile^c >



mult. \smile > \smile \smile^c \smile



Dk	\smile >	\smile^c \smile	Am,Trin
Vi	\smile >	\smile \smile	Sn1214/17,Va
Vi	\smile >	\smile \parallel	
Vi	\smile >	\smile \gg	Sn1214/17

ad



Am	\smile \smile >	\smile^c >	Dk,Ott
Am	> \smile >	\smile^c >	Dk,Ott



G355	> \smile >	\smile^c \gg	
Trin	\smile \smile >	\smile >	G355
Vi	\smile \smile >	\smile >	
Sn1214	\smile \smile >	\smile >	
Vi	\smile \smile >	\smile >	Sn1214
Vi	> \smile >	\smile \parallel	Sn1214/17

a.d



G355 > n e . / > u >

Vi > e / e > u > Sn1214



G355 > n e / > n / >



mult. > e . / > n / >

Am > e . / > n / > Ott



Am > e . / > n / >

G355 > e . / > n / >

Sn1214 > e / > / //

Vi > e / > / Sn1214/17

Vi > e / > / //

Sn1214 > e / > / >

Sn1214 > - / > / >

Vi > e / > / Sn1214/17

Vi > e / > / Sn1217

Sn1214 > e / > / //



Am > u > r / > > > > > .



G355 > > r . / > > > > .



Dk > u > r . / > > > > > Am,Ott

G355 > u > r . / > > > > >



Dk > u > r . / > > > > > Ott

Vi > u > r - / > > > > Sn1214

Vi > > r / r > > > > Sn1214/17

Vi > > r / r > > > > Sn1214

Sn1217 > > x r / r > > > >

16.9., PS00MF



Am > u > r / > > > > > Ott

Am r r / > > > > > >



Dk > u > r / > > > > > >

Ott r r / > > > > > >

Vi > > r / > > > > > Sn1217

Sn1214 > > > r / > > > > >



Trin r r / > > > > > >

Vi r r / > > > > > > Sn1214

Va r r / > > > > > >

Modifikácia prechodovým motívom // Modification – leading-on motif



G355 > u > e - > n -



Am > u > e ÷ e > n ✓ 3̣

Dk,Ott

Am e e ÷ e > n ✓ 3̣

Dk,Ott

Sn1217 > > e / ✓ > ✓ 3̣

Vi > > e / ✓ > ✓ 3̣

Sn1214

Vi e e / e > ✓ 3̣

Sn1214

Sn1217 e e / e > ✓ 3̣

pred G3



Am > ÷ e > e 3̣ 3̣

Dk > ÷ e > n 3̣ 3̣



Ott > ÷ e > n ✓ 3̣

Sn1214 e / e > \ >>u/

a.(hc)



Ott



G260



Am



Vi



Va



G355



Dk, Ott

Vi



Sn1214



Am



Dk, Ott, Trin

Am



G262

G355



Am



Dk



Trin

Vi



Sn1214

Sn1217



Vi

Vi



Sn1214/17, Va

Vi



Va

Sn1214



Sn1214



Vi



Sn1217

hc.e

hc



G260 > — ◡ > > > > > >

Sn1214 ◡ > > > > > >



Trin — — ◡ > > > > > >

G355 — — ◡ > > > > > >

Am — — ◡ > > > > > >



G54 > — ◡ > > > > > >



Dk — — ◡ > > > > > >

Ott

G355 — — ◡ > > > > > >

G355 — — ◡ > > > > > >

Trin > — ◡ > > > > > >



Am — — ◡ > > > > > >

Sn1214 — — ◡ > > > > > >

Vi — — ◡ > > > > > >

Sn1214/17,Va

Vi — — ◡ > > > > > >

Sn1214/17

Vi — — ◡ > > > > > >

Sn1217

ahc, chc



Am ♩ — — Dk,Ott
 Vi ♩ — — Sn1214,Va



mult. > — —
 mult. ♩ — —
 Vi,Va >x — — Sn1214/17
 Vi > ♩ — Va
 Vi ♩ — — Sn1214/17



Am > — —
 Dk ♩ — — Ott
 Va ♩ — — Vi
 Sn1214 ♩ — —



mult. ♩ > —
 Vi ♩ > —



G355 ♩ > > > >
 Vi ♩ > > > > Sn1214/17



G355 — ♩ > ♩ >
 Vi ♩ > ♩ > Δ.α.32, Sn1214
 Vi ♩ > ♩ > Va,Sn1214



Dk ♩ > > ♩ > Ott,G355



Am ♩ > > ♩ >



Trin ♩ > > ♩ >
 Am ♩ > > ♩ > Dk,Ott
 Vi ♩ > > ♩ >
 Vi ♩ > > ♩ > Sn1214/17,Va
 Sn581 ♩ > > ♩ >



Am > — — ♩ > — ♩ > > >
 Dk > — — ♩ > — ♩ > > > Ott
 Δ.α.32 >x — ♩ > — ♩ > > >
 Vi >x — ♩ > — ♩ > > > Sn1214
 Sn581 >x — ♩ > — ♩ > > >



G355 $\ddot{\vee}$ > $\ddot{\vee}$ - / > $\ddot{\vee}$ $\ddot{\vee}$ $\ddot{\vee}$ >
 Vi $\ddot{\vee}$ > $\ddot{\vee}$ - / > > $\ddot{\vee}$ > Sn1214



Am $\ddot{\vee}$ > - - $\ddot{\vee}$ > $\ddot{\vee}$ > $\ddot{\vee}$ >
 Dk $\ddot{\vee}$ > - - / > > $\ddot{\vee}$ > Ott



Dk > $\ddot{\vee}$ > - - / > > $\ddot{\vee}$ > Ott



Am > $\ddot{\vee}$ > - $\ddot{\vee}$ > $\ddot{\vee}$ > $\ddot{\vee}$ > $\ddot{\vee}$ > Dk, Ott
 Am > $\ddot{\vee}$ > - $\ddot{\vee}$ > $\ddot{\vee}$ > $\ddot{\vee}$ >
 Vi $\ddot{\vee}$ $\ddot{\vee}$ > / > - / > > $\ddot{\vee}$ > Sn1217/14
 Vi > / > > > - / > > $\ddot{\vee}$ > Va, Sn1214



Am $\ddot{\vee}$ > - - $\ddot{\vee}$ > $\ddot{\vee}$ > $\ddot{\vee}$ >
 Dk $\ddot{\vee}$ > - - / > > $\ddot{\vee}$ > Ott
 Vi $\ddot{\vee}$ > - - / > > $\ddot{\vee}$ > Sn1217
 Sn1214 $\ddot{\vee}$ > - - $\ddot{\vee}$ > > $\ddot{\vee}$ >



Am > $\ddot{\vee}$ > - $\ddot{\vee}$ - - $\ddot{\vee}$ > $\ddot{\vee}$ >



Ott $\ddot{\vee}$ - $\ddot{\vee}$ > - $\ddot{\vee}$ - - / > > $\ddot{\vee}$ >
 Vi > / $\ddot{\vee}$ > - $\ddot{\vee}$ - - / > > $\ddot{\vee}$ > Va
 Sn1214 > / $\ddot{\vee}$ $\ddot{\vee}$ - $\ddot{\vee}$ - - / > > $\ddot{\vee}$ >

Iné // Other

PVVe



Am / > > $\overset{\cup}{\vee}$, » Dk,Ott
 Sn1214 \curvearrowright > > \ \times
 Vi \checkmark > > \ »
 Va \checkmark > > \ »

25.12.



G260 / > > $\ddot{\vee}$ \checkmark > \times »



Am \curvearrowright > > \checkmark > $\overset{\cup}{\vee}$, »



Dk \curvearrowright > \checkmark \checkmark > ψ > » Ott
 Δ.α.32 $\dot{\vee}$ > \checkmark \checkmark > ψ » Vi,Sn1214,Sn581

d2.hc.a



Dk > ♩ ♯ > ♯₉ //
 Vi > ♩ ♯ > ♯ //
 Va > ♩ ♯ > ♯ //



Trin ♩ ♩ ♩ ♩ ♯ > ♯ >



Am ♩ ♩ ♩ ♩ ♯ > ♯₃ // Dk,Ott
 Am > ♩ ♯ > ♯₃ //
 Vi > ♩ ♩ ♩ ♩ ♯ > ♯ // Va



Am > ♩ ♯ > ♯₃ ♯₃
 Am > ♩ ♯ > ♯₃ ♯₃



Am ♩ ♩ ♯ > ♯₃ ♯₃ > Dk,Ott



G355 ♩ ♩ ♯ > ♯₃ ♯₃ >
 Am ♩ ♩ ♯ > ♯₃ ♯₃ > Dk,Ott,G355
 Sn1214 ♯ — ♯ > ♯ >
 Vi ♩ ♩ ♯ > ♯₃ > Sn1214,Va
 Vi > > ♯ > ♯₃ > Sn1214/17
 Vi ♩ ♯ > ♯₃ ♯₃ > Sn1214



Am >u > r / / >n C >u Dk,Ott
 Vi > > r / / > / >u
 Sn1217 > / > r / / > / >u
 Sn1214 > > > / / > / >u



Trin r / / > >u > - . - / / >n C >u
 Sn1217 r / / > >u >x - - / / > C >u
 Sn1214 r / / > >u > \ r / / > C >u



Dk r / / > >u > - . - / / >n C >u Ott
 Vi > / / > \ >x > = / / >u > C



Am - / / >n C >u / / >u Ott
 Dk - / / >n C >u / / >u Sn1214
 Vi . / / > / / >u
 Va . / / > / / >u

dc.a

dt

ahc-d



Ott >

Am > Dk,Trin

Vi > Sn1214



Am > — — >

Ott > — — >

Am Dk,Ott

Vi > — — Va,Sn1214

Vi Sn1214



Dk — — — — > Trin

Ott — — — — >

G54 > — — — — >

Vi > — — — — > Sn1217

Sn1214 — — — — >

Vi — — >

Sn1214 > >



Dk — — — — >

Vi,Va — — — — > Sn1214



G355 ↓ — — — ↘₉ »



G355 ˘ ˘ — — — ˘ ↘₉ »

Vi ˘ ˘ — — — ˘ > // Sn1217

Sn1214 ˘ ˘ — — — ˘ > //



Am — ˘ — — — ˘ ↘₉ » Dk

Ott ˘ ˘ — — — ˘ ↘₉ »

Vi ˘ ˘ / — — — ˘ ↘ » Sn1214/17

Va — ˘ — — — ˘ > »

Vi > > — — — ˘ ↘ »

Sn1214 ˘ ˘ / ˘ ˘ ↘ »



Dk ˘ ˘ — — — ˘ ↘₉ // Trin



Am —. ˘ — — — ˘ > » Dk,Ott,Trin

G260 —. ˘ — — — ˘ ↘₉ »

G355 —. ˘ — — — ˘ ↘₉ »

Vi — ˘ — — — ˘ > Δ.α.32,Sn1214,Sn581

Sn1217 — ˘ / — — — ˘ > //

Sn1214 — ˘ ˘ — — — ˘ > //

Vi ˘ ˘ — — — ˘ ↘ » Sn1214/17

Va ˘ ˘ — — — ˘ > //

Sn1214 ˘ ˘ / ˘ ˘ ↘ //

ahc-d2



G355 ♩ ♩ — — ≡ ♩ ♩ »



Dk ♩ ♩ — — ≡ ♩ ♩ » Ott



Am ♩ ♩ — — ≡ ♩ ♩ »



G54 ♩ ♩ — — ≡ ♩ ♩ »

Trin ♩ ♩ — — ≡ ♩ ♩ »

Vi ♩ ♩ — — ≡ ♩ ♩ » Sn1214



Trin > ♩ ♩ ≡ ♩ ♩ >



Am > ♩ ♩ ≡ ♩ ♩ > Dk

Vi > ♩ ♩ ≡ ♩ ♩ > Va

(a)hc-d zdvojené // doubled

Prechodové // Transitional



Am	˘	˘	—	—	˘	>ö	˘	>ö	˘	˘	˘	˘	˘	˘	˘	˘	˘	˘	˘	˘	Dk,Ott
mult.					˘	>ö	˘	>ö	˘	˘	˘	˘	˘	˘	˘	˘	˘	˘	˘	˘	
Vi	˘	˘	—	—	/	>:	/	>:	/	/	/	/	/	/	/	/	/	/	/	/	
Va	˘	˘	—	—	/	>:	/	>:	/	/	/	/	/	/	/	/	/	/	/	/	
Vi					/	>:	/	>:	/	/	/	/	/	/	/	/	/	/	/	/	Sn1214



Ott	>	>	˘	˘	˘	>	˘	>	—	˘	>ö	˘	˘	˘	˘	˘	˘	˘	˘	˘	
Dk	˘	—	—	˘	˘	˘	˘	˘	—	˘	>ö	˘	˘	˘	˘	˘	˘	˘	˘	˘	
Am	˘	˘	˘	˘	˘	˘	˘	˘	—	˘	>ö	˘	˘	˘	˘	˘	˘	˘	˘	˘	
Vi	˘	˘	˘	˘	˘	˘	˘	˘	—	/	>:	/	/	/	/	/	/	/	/	/	
Sn1214	˘	˘	˘	˘	˘	˘	˘	˘	—	/	>	/	/	/	/	/	/	/	/	/	

chc



Dk ˘ > — ˘ ˘ » Ott
 Vi ˘ > — ˘ \ » Sn1214
 Va ˘ > — ˘ \ »



Am ˘ > — ˘ > > > Dk
 Ott ˘ > — ˘ > > >
 Vi ˘ > — ˘ \ >
 Sn1214 ˘ > — ˘ \ >



Am —. ˘ —. ˘ > — ˘ > > > Dk, Ott



Dk — — —. ˘ > — ˘ > > > Am, Ott
 Vi ˘ — / ˘ > — ˘ \ >
 Vi ˘ / ˘ > ˘ \ //
 Sn1214 ˘ / > ˘ ˘ \ //
 Va ˘ — / ˘ > — ˘ > >
 Vi — / > > — ˘ \ »

ac.hc



G54



G355



Dk



Vi



Sn1214



Ott

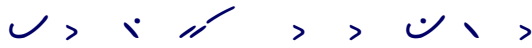


Am



Dk,Ott,Trin

Vi



Sn1214



Vi



Sn1214

Vi



Sn1214,Va

ee



Dk



Am



G355

Vi

Sn1214



Am



Ott



Dk



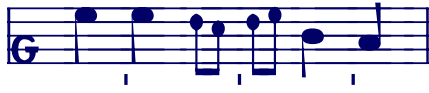
G355

Vi

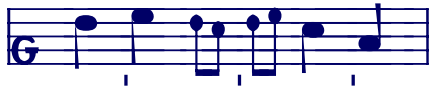
Sn1214



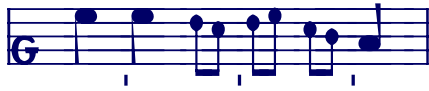
Am ↓ — ↗ > ḥ > ḥ ḥ ḥ > Dk,Ott
 Vi — — ↗ > > ḥ > > Va



G355 — . ḥ ḥ ḥ >



Ott — ḥ ḥ ḥ > ḥ > ḥ



Am — . ḥ ḥ ḥ > Dk
 Vi — ḥ ḥ ḥ > > Sn1217
 Sn1214 — ḥ ḥ ḥ > >

mt

mult.	Dk > — Am,Trin	Dk >
Sn1214/17	Am > —	G355 >
G355	G355 > — Ott,Trin	mult.
Am	Trin > — G261	Am
	Ott > —	Dk
Ott		Vi > Sn1214/17
	Am > — Ott	
Dk > Trin	Vi >	
Vi >	Vi > — Sn1214/17	
Vi Sn1214	Sn1214	
	Vi	
	Sn1214	



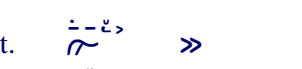



















16.9.

G260
Am Dk,Ott
G355
Vi
Sn1214 Sn1217

PX7

Dk Am,Ott
Vi
Sn1214
Vi
Va
Va

h2.a

 <p>G54</p>  <p>mult.</p>  <p>Trin</p>  <p>Vi</p>  <p>Sn1214</p>  <p>Vi</p>  <p>Sn1217</p>  <p>Sn1214</p>	 <p>Am</p>  <p>Ott</p>  <p>Dk</p>  <p>Sn1214</p>  <p>Vi</p>  <p>Va</p>	 <p>Trin</p>  <p>Am</p>  <p>Dk</p>  <p>Trin</p>  <p>Vi</p>  <p>Va</p>  <p>Sn1214</p>  <p>Sn1214</p>
--	--	--



Ott



Dk



Am



Dk



Vi



Sn1214



Vi



Trin > ˘ ˘ ˘ / ˘ ˘ ˘ >>



Am > - - / ˘ ˘ ˘ Ott



Dk > - - / ˘ ˘ ˘

Vi > ˘ ˘ ˘ / ˘ ˘ ˘ >>

Sn1214 > ˘ ˘ ˘ / ˘ ˘ ˘ >>

Va > ˘ ˘ ˘ / ˘ ˘ ˘ >>

e.a, d.a

Prosté // Simple



Ott ˙. ˘ >>x
 Am ˙. ˘ >>x G355
 Dk ˙. ˘ >>x
 Vi >˙. ˘ >
 Sn1214 >˙. ˘ >>x



Am / > >˙. ˘ >>x Dk,Ott



Trin / > >˙. ˘ >>
 Vi / > > ˘ >>
 Sn1217 / > >˙. ˘ >> Sn1214



Ott — — ˘ >>x
 Va — — ˘ >>



Am ˘ — — ˘ > Dk,Ott
 Am — — ˘ > Dk
 Vi ˘ — — ˘ >x Sn1214
 Va ˘ — — ˘ >>
 Vi — — ˘ >>
 Sn1214 ˘ — / >>



Am ˘ ˘ > — ˘ > Dk,Ott
 Va ˘ / > — ˘ >
 Vi ˘ / > > ˘ >



G355 ˙. —. ˘ ˘ > — ˘ >>x



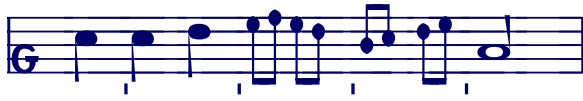
Ott ˘ ˘ ˘ ˘ > — ˘ >>



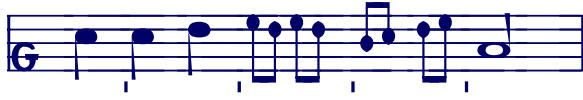
Am —. —. ˘ ˘ > — ˘ >> Dk
 Sn1214 — / ˘ ˘ > ˘ ˘ >>
 Sn1217 — / ˘ ˘ > — ˘ >>
 Vi — / ˘ ˘ > — ˘ >>

ee

0



Trin



Dk



Am Ott



G355

Vi Sn1217

Sn1214

Vi

Sn1214

Vi

Va

Sn1214

ya2

13.9. – hapax



mult. > — // ˘

Vi ˘ ˘ // ˘

Sn1217 > — // ˘

Sn1214 3 ˘ // ˘

PS03SPza – hapax



Am ˘ ˘ ˘ ˘



Dk — // ˘ Ott

Vi ˘ // ˘ Va

Pst1za – hapax



Ott ˘ ˘ ˘ ˘ > — / > > > ˘ ˘ ˘



Am > ˘ — . ˘ > — / > > > ˘ ˘ ˘



Dk > ˘ — . ˘ > — / > > > ˘ ˘ ˘

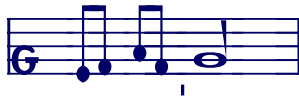
Vi > ˘ — ˘ > — / > > > ˘ ˘ ˘

Sn1214 3 ˘ — ˘ > — / > > > ˘ ˘ ˘

Va

G2

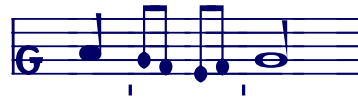
yG



Ott >ö _n //



Am >n _i // Dk
Vi >x >\ // Sn1214/17



Am >u, >.. // Ott



Trin >u >ö // Ott,G355
Vi >u >.. // Sn1214,Va
Vi >u >..)
Sn1214 >u >..)

a2.G



Am >n / > > Dk,Ott
Vi > / > >
Sn1214 — / > >

ha.G



mult. > / > >
mult. — / > >
Va > / > >
Vi > / > > Va
Sn1214 — / > >
Vi — > / > > Va



G355 —. > / > > > >



Am *u* > / > > > >



Dk —. > / > > > >

Vi — > / > > > >

Sn1214 — > / > > > >



Trin > / > > > >

Vi > / > > > > Sn1214



Am —. > / > > > > Dk,Ott

Vi — > / > > > > Va

Sn1214 — > / > > > >

Va > / > > > >



G355 > / > > > >



Am > / > > > > Dk,Ott

Vi // > / > > > >

Sn1214 // > / > > > >

a*.G

dt



G260 >.. ˘ ˘, ˘



mult. —. ˘ ˘, ˘



G54 —. ˘ > ˘

Vi ˘ ˘ \ //

Sn1214 ˘ ˘ \ //



Am ˘ — —. ˘ ˘

Ott ˘ — —. ˘ ˘ Trin

Vi ˘˘ — — \ ˘ ˘ Sn1214,Va

mt



Trin



Am



Dk, Ott

Vi



Sn1217

Sn1214



Trin



Am



Dk, Ott

Am



Ott, Dk, G355

Sn1214



Vi



Va



Vi



Sn1214



Am



Dk



Dk



Am



Dk, Ott

Vi



Va

Sn1214



Vi



Sn1214

G3-4

V 3. hlase sú formuly G3-4 vždy priebežné, ich motív na viacerých miestach nie je oddeliteľný od prívodu.
 // In the 3rd echos, all the formulae G3-4 are transitional (not ending a block).

mnt

-c

PX7



Am	>	∪	>u	ḡ:	∕∕∕∕ ^u	>∕	∕∕∕∕ ^u	
Dk	>n	∪	>u	ḡ:	∕∕∕∕ ^u	>∕	∕∕∕∕ ^u	Dk, Ott
Vi	∩	/	>u	∕∕∕∕	>∕	∕∕∕∕		
Vi	∩	/	>u	∕∕∕∕	>∕	∕∕∕∕		Va

mdt



Am >u, >.. Dk,Ott
 G355 > >..
 Vi > >.. Sn1214



Am >.. >u, >.. Dk,Ott
 Vi >.. > >.. Sn1214



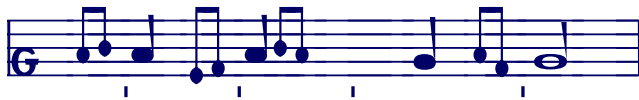
Am >.. > Dk,Ott
 Vi >.. > Va



Am > - >u, >.. Dk,Ott,Trin
 G54 > - > >..
 Vi > > - >u >..
 Sn1214 > - >u >..
 Sn1214 > >..



Ott >.. >



Am >.. >u >



Dk >u > G355
 Vi >u >.. > Sn1214

-a,h,c



Ott > — //> > />)
 Vi > — //> >: — />
 Sn1214 > — //> > /> />
 Vi > /> //> > /> />

Sn1214



G261 > — //> >: /> >
 Sn1214 /> — //> > /> >

G265



Ott > — //> /> /> >



Ott > — //> /> >: /> >>



Am — — //> /> >: /> >



G355 > — //> > — />



Am > — //> > /> >

Am,Dk > — //> > /> >

Dk > — //> > /> >

Trin >>u> — //> > /> >

Ott



Dk > — //> > /> >

Vi >> /> //> > /> >



Trin > n — > > >



Am > — > > >

Dk, Ott



G260 > — > > >

Va > — > > >

Vi

Sn1214 > — > > >

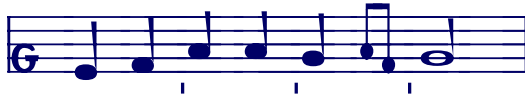
mddt

Estisan



Am		>u, >..	—	┌	┌	Dk, Ott	
Vi		>	>..	/	┌	┌	Va, Sn1214
Sn1214		>	>..	/	┌	┌	
Sn1214		>u	>..	/	┌	┌	

ddt



Am,Dk >n - - . ˘ > ˘n ˘˘
 Sn1214 >x ˘ / ˘ ˘ \ »
 Sn1217 >x - / ˘ > \ »

Ott,Trin,G355



Am >n - - . ˘ >˘, >˘˘ ˘˘
 Sn1214 > - / > >˘ - »
 Vi,Va > - / ˘ >˘ >˘˘ -
 Vi > - / ˘ > >˘˘)
 Sn1214 > - / ˘ >˘ >)

Dk,Ott
 Va

Koufisma



Am ˘ > - - . ˘ >˘˘ ˘˘ >n



G355 ˘ > - - . ˘ >˘˘ ˘˘ ˘

Ott



Dk ˘ > - - . ˘ >˘˘ ˘˘ >
 Vi ˘ > ˘ / ˘ ˘ ˘˘ ˘˘
 Sn1214 ˘ > ˘ / ˘ ˘ ˘˘ ˘˘

Trin

-a



Trin



Am



Trin



Dk



Ott



G355



Am



Dk



Vi



Sn1217



Sn1214



Vi



Sn1217



Sn1214



Va



Devte apantes

– ekvivalencia G3 -a s a2 typu d.hc.a :

// equivalence of G3 -a and a2, type d.bc.a:



Am



Dk,Ott,Trin



Dk



dmt



Ott > > - > > > >



Dk > > - > > > >

Vi > > - / \ / \ Va, Sn1214

-a,h,c



Am - . > > > >



Ott > > > >



G355 > > > >



Am > > > > Dk,Trin

Ott > > > >

Vi > > > > Sn1214

Vi > > > >

Sn1214 > > > >



G54 > > > >

Vi > > > > Sn1214/17



Ott
Trin



Am
Vi



Dk
Va



Am



Ott



Dk



Vi



Va

Vi



Va

Sn1214



Vi



Va, VR58

ddmt



G260

>n / >n >u >ö /x >



Trin

>n ∩ >n >u >ö // ʹ

Trin

— ∩ / >n >u >ö /xʹ



Am

>u, > — — ∩ >u, >.. // ʹ

G355

>n ∩ >u, >.. // ʹ

Vi

>x ∩ >x >.. /xʹ Sn1217

Sn1214

∩ ∩ >u ∩ /xʹ



Dk

>u >n — ∩ > >u >ö // ʹ

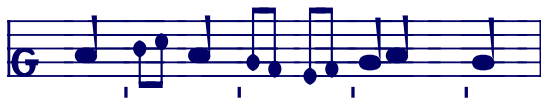
Va

/p > — / > >u >.. » ʹ

Sn1214

/p >x — /p > >u >.. » ʹ Vi

Koufisma Ga.G



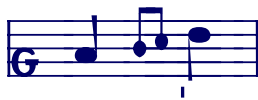
Am	— • /: > n > u, > .. /: >	Ott
Dk	— • /: > n > u > n̄ /: >	
Am	> n /: > n > u, > .. /: >	Dk, Ott
G262	> n /: > n > u > n̄ /: >	
Vi	— w /: > > u > .. /: >	
Vi	> /: > > u > .. /: >	
Sn1214	— w /: > > u > .. /: >	
Sn1214	> /: > > u > .. /: >	
Va	∑ /: > > u > .. /: >	
Va	— w /: > > u > .. /: >	

-a

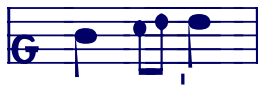


Am	> n /: > u ∑ /: >	Dk, Ott, Trin
----	-------------------	---------------

d



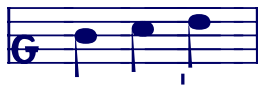
Am ♪ ♪ ♪



Am — ♪ ♪



Ott ♪ — ♪ Am
Dk ♪ — ♪ Ott
Vi, Va ♪ — ♪



Dk — — ♪ Am
Ott — — /
Trin — — ♪ Ott, G355
Sn1214 — — ♪
Vi — — / Sn1214/17
Vi ♪ ♪ / Va, Sn1214



G355 ♪ — ♪
Vi ♪ — ♪
Sn1214 > — ♪



mult. ♪ — — ♪
Ott ♪ — — / G260
Vi ♪ — — ♪ Sn1214/17
Vi > — — ♪ Va
Vi ♪ — — / Va
Sn1214 ♪ — — /



Am > ♪ — — ♪
Ott > ♪ — — ♪
Trin > ♪ — — — Dk



G355 > ♪ ♪ ♪ ♪
Δ.α.32 > ♪ ♪ ♪ / Vi, Sn1214, Sn581



G260 > — ♪ > — ♪



mult. > ♪ ♪ — — ♪
Vi > ♪ ♪ — — ♪ Sn1214/17

PS00MF



Am	>	r	—	.	r	>::	—	r
Ott	>	r	—	.	r	>::	—	r
Vi	r	r	/	r	>	>::)	r
Va	r	r	/	r	>::	—)	r

PS02MPza



Am	—	/	—	—)	Dk
Vi	—	/	—	—)	r
Va	—	/	—	—)	r
Sn1214	—	/	—	—)	r

1.1., 20.1.



Am	r	>	r	>	—	/	Dk, Ott
Vi	/	>	r	>	—	/	
Sn1214	/	>	r	>	—	/	
Sn1214	/	\	>	—	—	/	
Vi	/	\	>	>::	—	/	

29.6.



Trin	↓	r	—	/	>	r)
------	---	---	---	---	---	---	---



Am	↓	r	—	/	>	r)	Dk
----	---	---	---	---	---	---	---	----

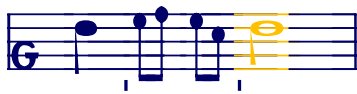


G355	↓	r	—	/	>	r)
G260	↓	r	—	/	>	r)
Ott	↓	r	—	/	>	r)
Vi	↓	r	—	/	>	r)
Sn1217	↓	r	—	/	>	r)
Sn1214	↓	r	—	/	>	r)

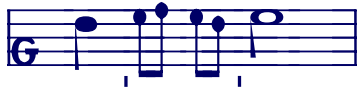
e

Koncový tón e je v 3. hlase ojedinelý. // The ending on e is rare in the 3rd echos.

24.12.

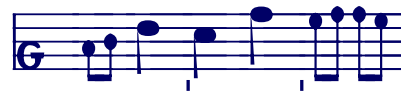


G355 —



Ott — Trin
Am — Dk
Vi Sn1214

Pst1za



Ott



Am Dk
Vi
Sn1214
Va

23.12.,20.1.



Dk —



Ott
Am



Dk G355
Sn1214
Vi
Sn1214

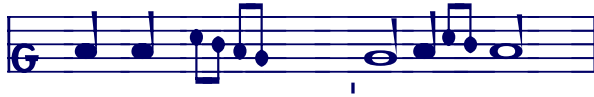
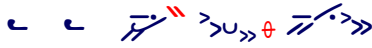
Fity

Gaa

16.9.,22.10.,25.10., PVVe



Am



G355



Dk



Ott

Am



Dk,Ott

Am



Vi



Sn1214



Va



Vi



Sn1217

Vi

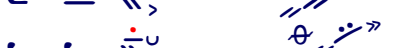


Sn1217

Sn1214



Sn1214



PVVe



G260



Am



Dk,Ott

Sn1214



Va



Vi



Ο πα-θών υ- πέρ η- μών,

a-c-a



Am



Ott
 Am
 Am
 Am

Dk



G355
 Trin



Ott



Dk



Ott G261/5
 Trin
 Vi Sn1214
 Sn1214
 Vi Sn1217
 Sn1214
 Vi Va



Am



G355



Am Dk, Ott
 Vi Sn1214
 Va
 Vi
 Sn1214
 Sn1214



Dk
 Dk
 Vi
 Sn1214
 Vi Sn1217

ac-ca

30.11.



Am



Trin



Dk Ott

Vi Sn1214/17

καί ως δέ- λε- αρ ιχ- θύ- σι,

1.1.



Am



Ott



Dk



Trin

Vi

Sn1214

καρ-πόν χει- λέ- ων ο- μο- λο- γούν- των,

c-a, c-G

13.9.



G355 — — — — —



Trin *uy* — — — — —



Am *uy* — — — — —



Ott — — — — —



Dk — — — — —

Vi — — — — — Sn1217

Sn1214 — — — — —
καί πά- λιν

PX4



Trin — — — — —



Am — — — — — Dk

Ott — — — — —

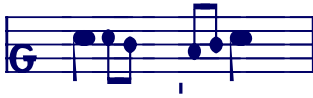
Sn1214 — — — — —

Vi — — — — —

Va — — — — —
ύ- δωρ **αι-** τών,

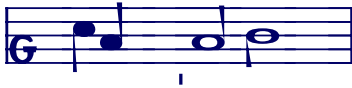
C-a-c

Praotec, 1.1., 2.1., PS00MF,Gennaioi



Am Dk

Trin



G355



Ott



Am Dk,Ott,Trin

G355

Vi Sn1214/17, Va

Sn1214

Vi

Sn1214

Vi Sn1214/17,Va

μεθ' ὄν
 ἐξ ὄν
 κά- γω
 τού δέ, 2x
 οι δέ,
 ο μέν,
 τού μέν,
 υ- μάς
 δι- ά

13.9.



Ott



G355



Am



Dk



Vi



Sn1217



Sn1214



βα- φαίς

PVVe



G260 < - / > ♯^u ♯ / ♯, ♯



Am > - / > ♯^u ♯ / ♯



Ott > - / > ♯^u ♯ / ♯, ♯



Dk < - / > ♯^u ♯ / ♯, ♯

Vi < - / > ♯^u ♯ / ♯, ♯

Va < - / > ♯^u ♯ / ♯, ♯

Πά-τερ ά- γι- ε,

PX7



G262 > < ♯ / > > ♯, ♯ > ♯ > ♯^u, ♯ / ♯



Am > < ♯ / > > ♯, ♯ > ♯ > ♯^u, ♯ / ♯ Dk

Ott > < ♯ / > > ♯, ♯ > ♯ > ♯^u, ♯ / ♯

Vi > < ♯ / > ♯ > ♯ > ♯ > ♯

Va > < ♯ / > ♯ > ♯ > ♯ > ♯

0. στη-ρι- χθέν- τες τοίς λό- γοις τών Μα-θη- τών,
 1. εν πυ- ρί- νω τώ εί- δει τοίς Μα-θη- ταις
 2. τήν α- ἱ- δι- ον φύ- σιν τε καί απ- λήν,