

Automelon

Κύριε ει καί κριτηρίω παρέστης

Γ̂η, ἄψε ἡ εὐδήλιψιδ̂ προεργάλιζ̂ ε̂η

8. hlas // plag. 4th echos

Samopodoben (bez podobnov) – od byzantských cez ruské po najstaršie ruténske varianty
// Automelon only – from Byzantine scores through Russian to the oldest Ruthenian variants

Byz

G = Am 733 (L. Tardo, L'Ottoeco, 224 ff.)

Sn1260 322r (321)

Sn1264 75v (77)

Sn1265 84v (89) = Sn1264

Rus

Umiestnenie medzi samopodobenmi (ozn. ^x) // Placed among automela (marked ^x)

BN 143, S414 246r, S415 153r, S416 309v, S424 186r, S426 218v, S429 113r, S431 41v, S432 189r, S433 119r, S430–,

Umiestnenie v nedeľnom Oktoichu // Placed in the Sunday Oktoechos

S444 98r, S411 439v, S412 67v, S414 232v, S425 125r, S429 294v, S431 109v, S432 117r

POb (Pomor. Obichod) 33v, POk 218v (Pomor. Oktaj)

RI

J002 236r, J046 268v, J480 47r, J289 8v, J429 9v, J673 65r, I229 273r

Prepis // Transcription

G 0 > > > > > > > > > >
G 1 > > > > > > > > > >

G 2 > > > > > > > > > >
0 Κύ-ρι-ε, * ει και κρι-τη-ρί-ω παρ-έ-στης, *

BN > \ = > \ = > \ = > \ = > \ = > \ = > \ =

S444 > \ = > \ = > \ = > \ = > \ = > \ = > \ = > \ =

S424 > \ = > \ = > \ = > \ = > \ = > \ = > \ = > \ =

S431^x > \ = > \ = > \ = > \ = > \ = > \ = > \ = > \ =

S426 > \ = > \ = > \ = > \ = > \ = > \ = > \ = > \ =

S414^x > \ = > \ = > \ = > \ = > \ = > \ = > \ = > \ =

S414₀ > \ = > \ = > \ = > \ = > \ = > \ = > \ = > \ =

0 Γο-σπο-δι Α-ϗε Η να σοϗ-δι-ϗι προ-δο-στα

S411/12/16/29/29^x

S431₀ >

POκ Γο-σπο-δι Α-ϗε Η να σοϗ-δι-ϗι προ-δο-στα

POβ Γο-σπο-δι

J002 Γο-σπο-δι Α-ϗε Η να ϗχ-δι-ϗι προ-δο-στα

J480 Γο-σπο-δι Α-ϗε Η να ϗχ-δι-ϗι προ-δο-στα

J672/046

J289 Γο-σπο-δι Α-ϗε Η να ϗχ-δι-ϗι προ-δο-στα

J673, I229/80; J429

J673, I229/80; J429 Γο-σπο-δι



G 0
0

υ- πό Πι- λά- του κρι-νό- με- νος, *

S444



S411;



S414^x



S416/24;

S414 \

S431^x



S433^x



S429



S429^x



S432



S431

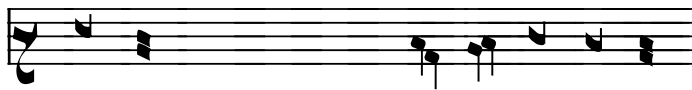


0

ΠΗ_ ΛΑ_

ΤΟ_ ΜΕ_ ΣΟΥ_ ΔΗ_ ΜΟ_.

POk

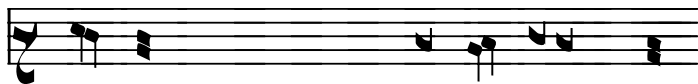


POb

ΠΗ_ ΛΑ_

ΤΟ_ ΜΕ_ ΣΟΥ_ ΔΗ_ ΜΟ_.

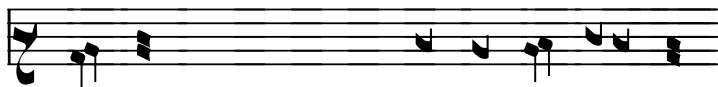
J046



ΠΗ_ ΛΑ_

ΠΩ_ ΣΧ_ ΔΗ_.

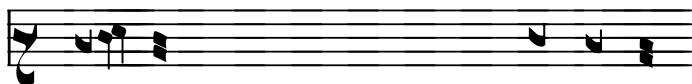
J002



ΠΗ_ ΛΑ_

ΠΟ_ ΜΖ_ ΣΧ_ ΔΗ_ ΜΟ_.

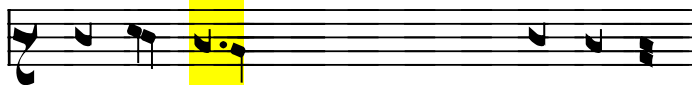
J480



ΠΗ_ ΛΑ_

ΠΩ_ ΣΧ_ ΔΗ_.

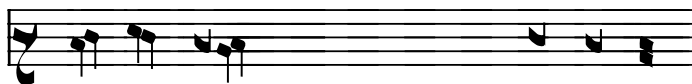
J289/429, I229/80



J673



J672



ΠΗ_ ΛΑ_ ΠΩ_

ΣΧ_ ΔΗ_.



G 0
0 αλλ' ουκ απ-ε-λειφ-θης του θρό-νου*

S444
S432
S416
S412/31
S429
S414^x

S411/24, BN // BN =>

S431^x

S429^x,

0 Η̅ Ν̅ Ω̅ ΤΟ̅ ΣΤΟΥ ΠΗ̅ Ω̅ ΤΟ̅ ΠΡΕ̅ ΣΤΟ̅ ΛΑ̅.

POk

Η̅ Ν̅ Ω̅ ΣΤΟΥ ΠΗ̅ Ω̅ ΤΟ̅ ΠΡΕ̅ ΣΤΟ̅ ΛΑ̅.

J002

J480

J046

J289

I229

Η̅ Ν̅ Ω̅ ΣΠ̅Χ̅ ΠΗ̅ Ω̅ ΠΡΕ̅ ΣΠΟ̅ ΛΑ̅.

J429

I80

Η̅ Ν̅ Ω̅ ΣΠ̅Χ̅ ΠΗ̅ Ω̅ ΠΡΕ̅ ΣΠΟ̅ ΛΑ̅.

POb

Η̅ Ν̅ Ω̅ ΣΤΟΥ ΠΗ̅ Ω̅ ΠΡΕ̅ ΣΤΟ̅ ΛΑ̅.

J673

Η̅ Ν̅ Ω̅ ΣΠ̅Χ̅ ΠΗ̅ Ω̅ ΠΡΕ̅ ΣΠΟ̅ ΛΑ̅.

J672

Η̅ Ν̅ Ω̅ ΣΠ̅Χ̅ ΠΗ̅ Ω̅ ΠΡΕ̅ ΣΠΟ̅ ΛΑ̅.



Sn1260 0

τὼ Πα-τρί συγ-καθ-ε-ζό-με-νος,



G 012 0

τὼ Πα-τρί συγ-καθ-ε-ζό-με-νος, *

S444

Handwritten musical notation for S444.

S411/12/16/31^x, BN

S414^x

Handwritten musical notation for S414^x.

S424

S414

Handwritten musical notation for S414.

S429^x

Handwritten musical notation for S429^x.

S433^x

Handwritten musical notation for S433^x.

S432^x

Handwritten musical notation for S432^x.

S429/32

Handwritten musical notation for S429/32.

S431

Handwritten musical notation for S431.

0

СѢ Ѡ_ ТѢ_ ЦѢ_ МЕ СѢ_ ДА.

POk



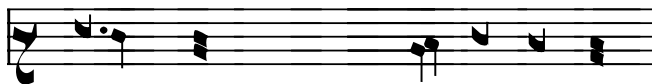
СѢ Ѡ_ ТѢ_ ЦѢ_ МЕ СѢ_ ДА.

J002/672



СѢ Ѡ_ ПѢ_ ЦѢ_ МЕ СѢ_ ДА.

J046

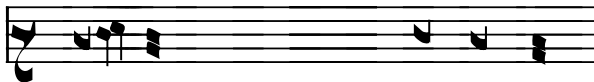


СѢ Ѡ_ ЦѢ^ СѢ_ ДА^.

POb

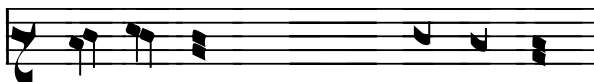


J480



СѢ Ѡ_ ЦѢ^ СѢ_ ДА.

J289/429/673, 1229/80



СѢ Ѡ_ ЦѢ^ СѢ_ ДА^.



G 0 κ α ί α - ν α - σ τ ά ς εκ νε-κρών*

S416

S411

S431^x

S414^x

S431

S429^x

S414

S432^x

S412/24, BN, S444

S415

S429



И БОС_КРЕ_СО ИЗ_МѢ_ТВЫ_И_ХО



J672



И БОС_КРЕ_СЕ ИЗ_МЕР_ПВН.



И БОС_КРЕ_СЕ ИЗ_МѢ_ПВН.

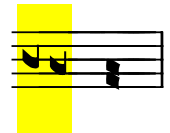


И БОС_КРЕ ИЗ_МЕР_ПВН.

J429



J289, I229



И БОС_КРЕ_СЕ ИЗ_МЕР_ПВН.

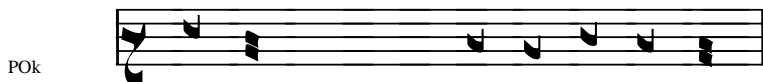


G 0 > > > > > >
 0 τόν κό-σμον η- λευ-θέ- ρω- σας, *

S444₀₁
 S412
 S414^x
 S429₀
 S429^x
 S433^x
 S431₀

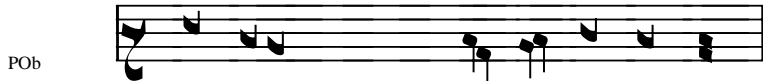
Handwritten musical notation symbols.

S424/11₀₁/31^x, S412₁, BN, S416
 S414₀



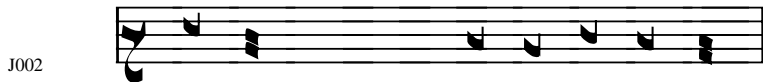
POк

ВСЕ_ГО МН_РА СВ_О_БО_ДН



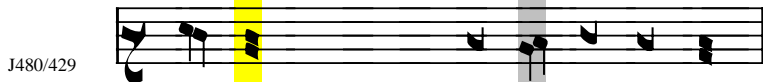
POб

МНРЪ СВ_О_БО_ДН^ε СН.

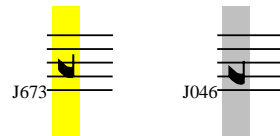


J002

ВСЕ_ГО МН_РА СВ_О_БО_ДН.

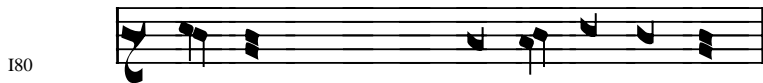


J480/429



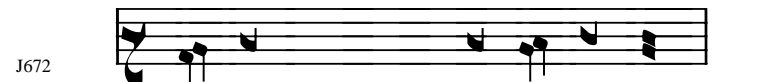
ВСЕ_ГО МН_РА СВ_О_БО_ДН.
 МН_РЪ СВ_О_БО_ДН^ε СН.

J289, I229



I80

ВСЕ_ГО МН_РА СВ_О_БО_ДН.



J672

МНРЪ СВ_О_БО_ ДН



trisem

G 0 εκ τής δου-λεί- ας του αλ- λο- τρί- ου,*

S444

S411

S412

S431^x

S426

S432

S416

S414^x

S414

S432

S429

S429^x

S431

0 ω_ το ρα_ βο_ τ'γι υιο_ χα_ गो.

BN; S424

POk
ω_ το ρα_ βο_ τ'γι υιο_ χα_ गो.

POb
ω̇ ρα_ βο_ τ'γι υιο_ χα_ गो.

J002
ω_ πο ρα_ βο_ πλι υιο_ χα_ गो.

J480
ω̇ ρα_ βο_ πλι υιο_ χα_ गो.

J046/289/429/673, I229/80

J672
ω̇ ρα_ βο_ πλι υιο_ χα_ गो.



G

ως οικ-τίρ-μων και Φιλ-άν- θρω- πος. +



Sn1264 012

ως οικ-τίρ-μων και Φιλ- άν- θρω-πος. +

S444

ια_ κο_ ψιε_ αρ_ η_ γε_ λο_ βκ_ κο_ λι_ ο_ βε_ ψε.

S411

ια_ κο_ ψιε_ αρ_ η_ γε_ λο_ βκ_ κο_ λι_ ο_ βε_ ψε.

S412/16/24/31^x, BN; S431

S433^x

ια_ κο_ ψιε_ αρ_ η_ γε_ λο_ βκ_ κο_ λι_ ο_ βε_ ψε.

S429

POb



POk

ια_ κο_ ψιεαρ_ η_ γε_ λο_ βκ_ κο_ λι_ ο_ βε_ ψε.

J046



J480

ια_ κο_ ψιε_ αρ_ η_ γε_ λο_ βκ_ κο_ λι_ ο_ βε_ ψε.

J480



ια_ κο_ ψιεαρ_ η_ γε_ λο_ βκ_ κο_ λι_ ο_ βε_ ψε.

J672



ια_ κο_ ψιε_ αρ_ η_ γε_ λο_ βκ_ κο_ λι_ ο_ βε_ ψε.

J289



I229

ια_ κο_ ψιεαρ_ η_ γε_ λο_ βκ_ κο_ λι_ ο_ βε_ ψε.

J673



ια_ κο_ ψιε_ αρ_ η_ γε_ λο_ βκ_ κο_ λι_ ο_ βε_ ψε.

J429



I80

ια_ κο_ ψιε_ αρ_ η_ γε_ λο_ βκ_ κο_ λι_ ο_ βε_ ψε.

Posledné kolon s výraznejšie divergentným nápevom:

// The last colon with divergent settings:

S414 ^x						
S415						
S414						
S429 ^x						
S432						
	ΓΑ_ ΚΟ_ ΨΙΕ_	ΑΡΘ Η_ ΥΕ_ ΛΟ_ ΒΚ_ ΚΟ_	ΛΙΟ_ ΒΕ_ ΨΕ_			

J002

ΓΑ_ ΚΟ_ ΨΙΕΔΩ̇ Η_ ΥΕ_ ΛΟ_ ΒΚ_ ΚΟ_ ΛΙΟ_ ΒΕΨΖ_.