

Αναστάς ο Ιησούς

Ῥοικρέεζ ἰήεζ ῶ γρόβα

6. hlas // 2nd plag. echos

Byz.

Sn1480 73r –



????

Ru. ref.

S414 90r, S430 208v, S433 56v, S434 223v, S437 253r

RI

J002 248r, J289 38r, L1709 180r, J046 234r, L1816 201r,




Text

Ἦχος πλ. β'

Αναστὰς ο Ἰησοῦς ἀπὸ τοῦ τάφου
καθὼς προείπεν, 6+5+5
ἔδωκεν ἡμῖν
τὴν αἰωνίον ζωήν καὶ μέγα ἔλεος. 5+7+6



Вοικρέεѣз ѿиѣз ѿ грѡба, ѿкоже прорече,
ἀλλὲ ἡλιμεν κηνότις βίτηνην ἢ βελίη κηλοςτη.
ἀλλὲ ἡλιμεν κηνότις βίτηνην ἢ βελίη κηλοςτη.



Stich

S430 
 S433 
 ο_ ΜΗ_ ΛΟΥΗ ΠΑΣЪ БО_ ЖЕ

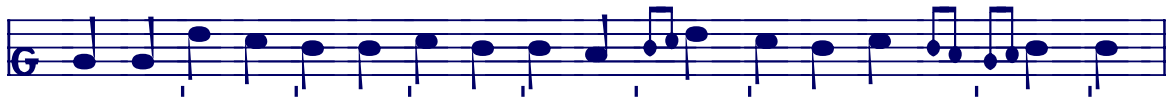
S430 
 S433 
 ΠΟ ΒΕ_ ΛΗ_ ΞΕ_ Η ΜΗ_ ΛΟ_ ΣΤΗ ΤΒΟ_ Ε_ Η


S430 
 S433 
 ΠΟ ΜΝΟ_ ΓΗΜЪ ΞΕ_ ΔΡΟ_ ΤΑΜЪ ΤΒΟ_ Η_ ΜЪ

S430 
 S433 
 Ω_ ΞΥ_ ΣΤΗ ΒΕΖ_ ΣΑ_ ΚΟ_ ΗΗ_ Δ_ ΜΟ_ Δ

S430 
 БО_ ЖЕ СПА_ СЕ_ ΜΟ_ Η.
 S433 
 БО_ ЖЕ СПА_ СЕ_ ΜΟ_ Η.

Melos



Sn1480 
 A- να-στάς ο Ι- η- σούς α- πό του τά- φου κα- θώς προ-εί- πεν,

S414 

S430 

S434 

S437 

Вο_ σκρε_ σω_ η_ σογ_ съ_ ω_ το_ გრ_ω_ ბა_ ἰα_ κο_ ჯე_ პრო_ რე_ γε_

S433 

Вο_ σκρε_ со_ η_ σογ_ съ_ ω_ το_ გრ_ω_ ბა_ ἰα_ κο_ ჯე_ პრო_ რე_ γε_



Вο_ σκρε_ ἰ_ η_ съ_ съ_ ὰ_ გრ_ω_ ბა_ ἰα_ κο_ ჯე_ პრო_ რე_ γε_



Вο_ σκρε_ ἡ_ съ_ съ_ ὰ_ πο_ გρ_ω_ ბა_ ἰα_ κο_ ჯე_ პრო_ რე_ γε_



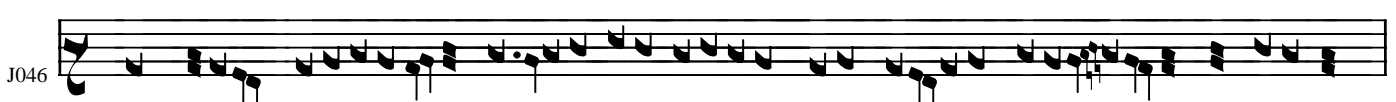
Вο_ σκρε_ съ_ ἰ_ ὰ_ ὰ_ გრ_ω_ ბა_ ἰα_ κο_ ჯე_ პრო_ რე_ γε_



Вο_ σκρε_ съ_ ἰ_ ὰ_ ὰ_ ὰ_ გრ_ω_ ბა_ ἰα_ κο_ ჯე_ პრო_ რე_ γε_









Вο_ σκρε_ съ_ ἰ_ η_ съ_ съ_ ὰ_ გρ_ω_ ბა_ ἰα_ κο_ ჯე_ პრო_ რე_ γε_



Вο_ σκρε_ съ_ ἰ_ ὰ_ ὰ_ ὰ_ გρ_ω_ ბა_ ἰα_ κο_ ჯე_ პრო_ რე_ γε_



Sn1480 
 έ- δω- κεν η- μίν τήν αι- ώ- νι- ον

S414 
 S430 
 S434 
 S437 
 S433 
 И ДА- РО- БА НА- МЪ ЖИ- БО- ТЪ БЪ- ГЕ- НЫ- И

S460 
 ДА- ДЕ НА ЖИ- БО БЪ- ЧНЫ- И

J002 
 И ДА- РО- БА НА ЖИ- БО БЪ- ГЕ- НЫИ

J289 
 И ДА- РО- БА НА ЖИ- БО БЪ- ЧНЫИ

L1709 
 И ДА- РО- БА НА ЖИ- БО БЪ- ЧНЫИ

L1816 
 ДА- ДЕ НА ЖИ- БО БЪ- ЧНЫИ

J046 
 И ДА- РО- БА НА ЖИ- БО БЪ- ЧНЫИ



Sn1480 > > > > > > >
 ζω- ήν και μέ- γα έ- λε- ος.

S414 ♪ ♪ ♪ ♪ ♪ ♪ ♪ ♪ ♪ ♪
 S430 ♪ ♪ ♪ ♪ ♪ ♪ ♪ ♪ ♪ ♪
 S433-34/37 ♪ ♪ ♪ ♪ ♪ ♪ ♪ ♪ ♪ ♪
 ΜΗ_ ρω Η ΒΕ_ ΛΗ_ ΓΟ ΜΗ_ ΛΟ_ ΣΤΉ.



S460 Η ΒΕ_ ΛΙ_ ΓΟ ΜΗ_ ΛΟΣΠΉ.



J002 ΜΙ̇ Η ΒΕ_ ΛΙ_ ΓΟ ΜΗ_ ΛΟΣΠΉ.



J289 ΜΙ̇ Η ΒΕ_ ΛΙ_ ΓΟ ΜΗ_ ΛΟΣΠΉ.



L1709 ΜΗ̇ Η ΒΕ_ ΛΙ_ ΓΟ ΜΗ_ ΛΟΣΠΉ.



L1816 Η ΒΕ_ ΛΙ_ ΓΟ ΜΗ_ ΛΟΣΠΉ.



J046 Η ΒΕ_ ΛΙ_ ΓΟ ΜΗ_ ΛΟΣΠΉ.