

Cez pôst // Lenten matins

6. hlas // 2nd plag. echos

Τά πλήθη τών πεπραγμένων

Sn1480 73v (074)

Sn1264 188r (189)

S410 113r, S425 333v, S426 220r, S429 174r, S431 226r, S432 157v, S433 74r, S437 283r,
S438 211r

I80 50r ~ Juh1809 40r, L1709 34, J046 214r

Τά πλήθη τῶν πεπραγμένων μοι δεινῶν

Ἦχος πλ. β'

Τά πλήθη

τῶν πεπραγμένων μοι δεινῶν
εννοῶν ο τάλας.

τρέμω ** τὴν φοβερὰν ** ἡμέραν τῆς κρίσεως,
ἀλλὰ θαρρῶν εἰς τὸ ἔλεος / τῆς εὐσπλαγγνίας σου.

ὡς ο Δαυὶδ βοῶ σοι **
Ἐλέησόν με ο Θεός, **
κατὰ τὸ μέγα σου ἔλεος.

Мнѡжествѣ

содѣянныхъ мнѡю лѡтыхъ,

помышлѣа ѡкаѣнныхъ.

трепѣщѣ στράшнагѡ днѣ ѡднагѡ:

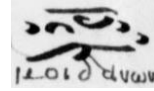
но надѣаѣа на мѡтъ бѣгодѣрѡбѣа тѡеѡгѡ.

ѡкъ дѣдѡ воπѡю тн:

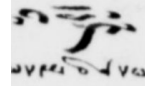
помѣдѣ мѡ бѣѣ

по велѣѣѣ тѡеѣ мѡтн.

λπί
πυ



Sn1480 Τά πλή-θη τών πε-πραγ-μέ-νων μοι δει-νών,



Sn1264 Τά πλή-θη τών πε-πραγ-μέ-νων μοι δει-νών,

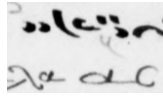
S410
 S438
 S426
 S429
 S425
 S437

S432; 431/33

ΜΗΩ_ΚΕ_ΣΤΒΟ_СО_ΔΕ_Α_ΝΉΙ_ΧΟ_ΜΗ_ΖΟ_ΛΟ



ΜΗΩ_ΚΕ_ΣΤΒΟ_СО_ΔΕ_Α_ΝΉΙ_ΧΟ_ΜΗ_ΖΟ



Sn1480 >ñ — ✓ > >υ >>ξ>η
 εν- νο- ών ο τά- λας,



Sn1264 >η.. — ✓ > ξ >> ξ
 εν- νο- ών ο τά- λας,

S410 L L L L L L =// L L
 S438 L L L L L L =// = L
 S426/31 L L L L L L =// \ =
 S432 L L L L L L =// / =
 S437 L L L L L L =// / =
 S429 L L L L L L =// / =
 S433 L L L L L L =// \ =
 S425 L L L L L L =// = =
 ΠΟ_ ΜΥ_ ΣΑΛ_ Σ_ ΓΟ_ Ω_ ΚΑ_ ΔΗ_ ΝΥ_ Η

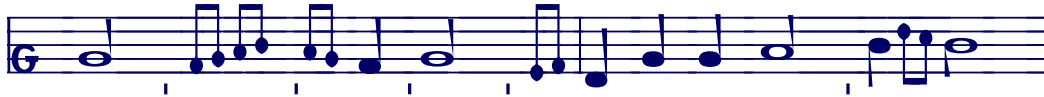
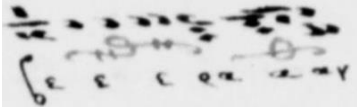


ΠΟ_ ΜΥ_ ΣΑΛ_ Σ_ ΓΟ_ Ω_ ΚΑ_ ΔΗ_ ΝΥ_ Η



ΠΟ_ ΜΥ_ ΣΑΛ_ Σ_ ΓΟ_ Ω_ ΚΑ_ ΔΗ_ ΝΥ_ Η

Juh1809



Sn1480 τρέ- μω τήν φο- βε- ράν



Sn1264 τρέ- μω τήν φο- βε- ράν

S410 S438

S431

S426/33

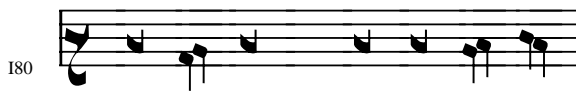
S432

S437

S429

S425

η τρέ_πε_ ψιχ στρα_ψινα_γο



L1709, Juh1809

η τρέ_πε_ ψιχ στρα_ψινα_γο



η τρέ_πε_ ψιχ στρα_ψινα_γο



Sn1480 η- μέ- ραν τής κρί- σε- ως,



Sn1264 η- μέ- ραν τής κρί- σε- ως,

S410



S426/31/33



S432



S429



S437



S438



S425



ΔΗΕ ΣΟΥ ΔΕ ΝΑ ΓΟ



180

L1709, Juh1809



J046

ΔΗΕ ΣΧ ΔΗΑ ΓΟ



Sn1480 αλ- λά θα- ρρών εις τό έ- λε- ος τής ευ-σπλαγ-χνί- ας σου,



Sn1264 αλ- λά θα- ρρών εις τό έ- λε- ος τής ευ-σπλαγ-χνί- ας σου,

S410
S438
S431
S426
S433
S437
S432
S429
S425



NO HA ΔΚ ΙΑ CA HA MH ΛΟ CΤΒ ΒΛΑ ΓΟ ΟΥΓ ΡΟ ΒΗ Δ ΤΒΟ Ε ΓΟ

I80  Juh1809

HO HA ΔΚ ΓΟ CA HA MH ΛΟ ΒΛΑ ΓΟ ΟΥ ΠΡΟ ΒΙ Δ ΠΒΟ Ε ΓΟ


L1709 

HO HA ΔΚ ΓΟ CA HA MH ΛΟ ΒΛΑ ΓΟ ΟΥ ΠΡΟ ΒΙ Δ ΠΒΟ Ε ΓΟ


J046 


















HO HA ΔΚ Δ CA HA MH ΛΟ ΒΛΑ ΓΟ ΟΥ ΠΡΟ ΒΙ Δ ΠΒΟ Ε ΓΟ



Sn1480 
 ως ο Δα-υίδ βο-ώ σοι.



Sn1264 
 ως ο Δα-υίδ βο-ώ σοι.

S410/38			
S426			S431 
S432			S433 
S437			
S429			
S425			
	ΙΑ_ ΚΟ_ ΔΑ_ ΒΥΙ_ ΒΥ_ ΒΟ_ ΠΗ_ ΙΟ_ ΤΗ		



Juh1809



ΙΑ_ ΚΟ_ ΔΑ_ ΒΥΙ_ ΒΟ_ ΠΗ_ ΙΟ_ ΠΗ



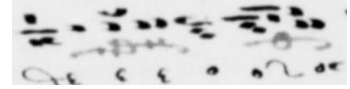
ΙΑ_ ΚΟ_ ΔΑ_ ΒΥΙ_ ΒΟ_ ΠΗ_ ΙΟ_ ΠΗ



Sn1480 > ˘ — ˘ > > ˘ > ˘ >> ˘ ˘ >>
 Ε- λέ- η- σόν με ο Θε- ός,



Sn1264 —. — ˘ ˘ > ˘ > ˘ >> ˘ ˘ >>
 Ε- λέ- η- σόν με ο Θε- ός,



S410 ˘ ˘ ˘ ˘ ˘ ˘ \ =

S438 ˘ ˘ ˘ ˘ ˘ \ =

S426 ˘ ˘ ˘ ˘ \ =

S431 ˘ ˘ ˘ ˘ \ =

S432/33 ˘ ˘ ˘ ˘ \ =

S437 ˘ ˘ ˘ ˘ \ =

S429 ˘ ˘ ˘ ˘ \ =

S425 ˘ ˘ ˘ ˘ \ =

ΠΟ_ ΜΗ_ ΛΟΥ_ Η ΠΑ_ ΣΪ_ ΒΟ_ ΖΕ

ΠΟ_ ΜΗ_ ΛΟΥ_ Η ΜΑ_ ΒΟ_ ΖΕ



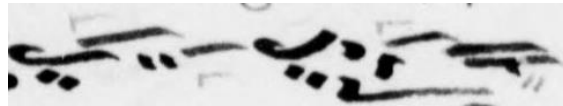
L1709, Juh1809

ΠΟ_ ΜΗ_ ΛΪ_ Η ΜΑ_ ΒΟ_ ΖΕ



ΠΟ_ ΜΗ_ ΛΪ_ Η ΜΑ_ ΒΟ_ ΖΕ

Sn1480



Sn1480 κα- τά τό μέ- γα σου έ- λε- ος.



Sn1264 κα- τά τό μέ- γα σου έ- λε- ος.

S410
 S438
 S426
 S429
 S433
 S437
 S432
 S425

ΠΟ ΒΕ_ ΛΗ_ ЦѢ_ Η ΜΗ_ ΛΟ_ СΠΗ ΤΒΟ_ Ε_ Η.

S431



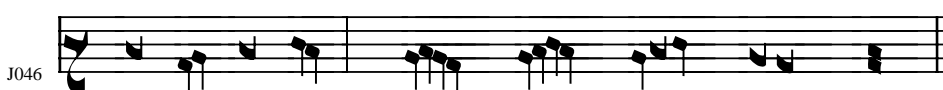
Juh1809

ΠΟ ΒΕ_ ΛΗ_ ЦѢ_ ΠΒΟ_ Ε_ ΜΗ_ ΛΟ_ СΠΗ.



L1709

ΠΟ ΒΕ_ ΛΗ_ ЦѢ_ ΠΒΟ_ Ε_ ΜΗ_ ΛΟ_ СΠΗ.



J046

ΠΟ ΒΕ_ ΛΗ_ ЦѢ_ ΜΗ_ ΛΟ_ СΠΗ ΠΒΟ_ Ε_.